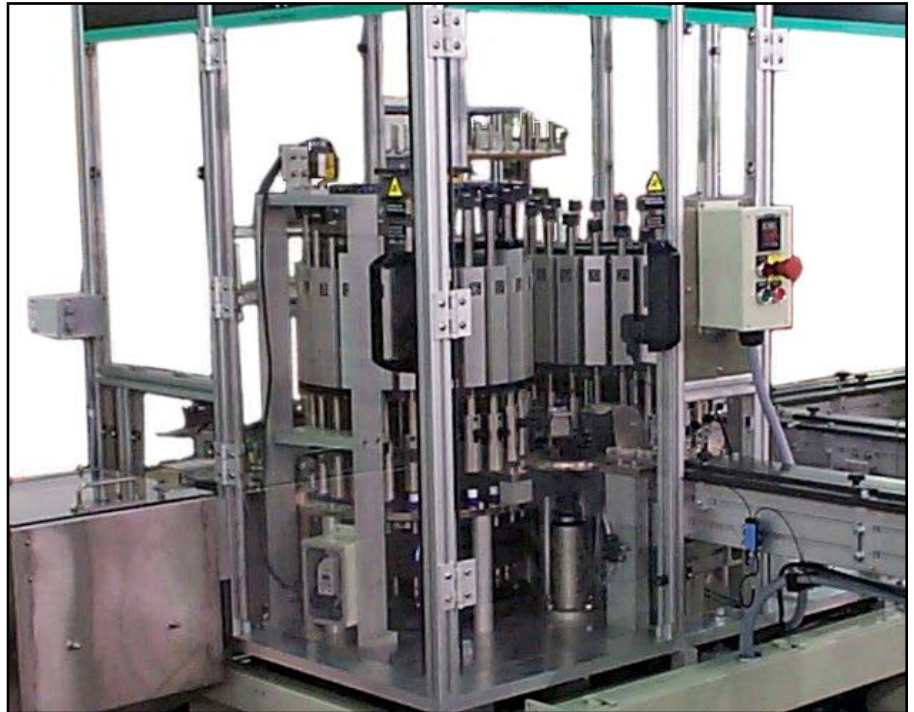
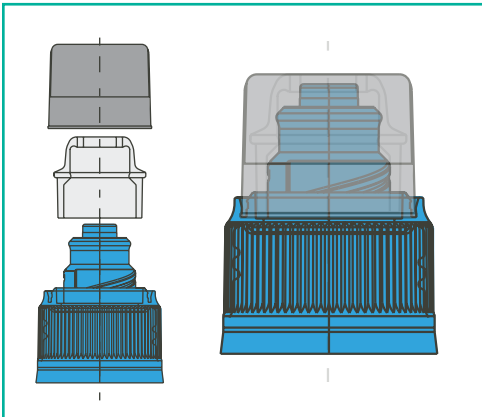


3-Piece Sports Cap Assembly System



Features

- ◆ Using Modular Construction
- ◆ Easy Changeover
- ◆ Safety Interlocks
- ◆ PLC Control (Allen-Bradley or Mitsubishi)

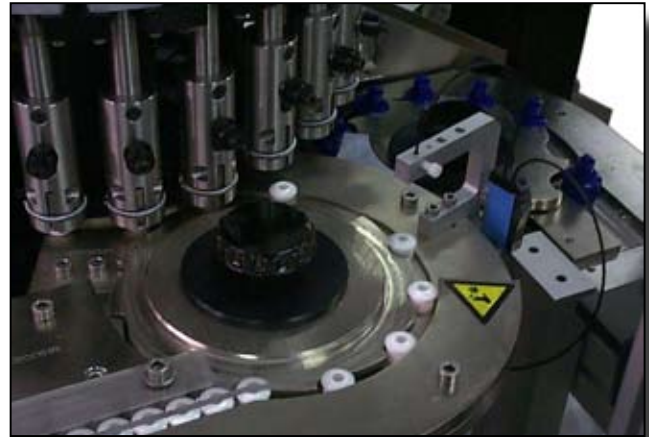
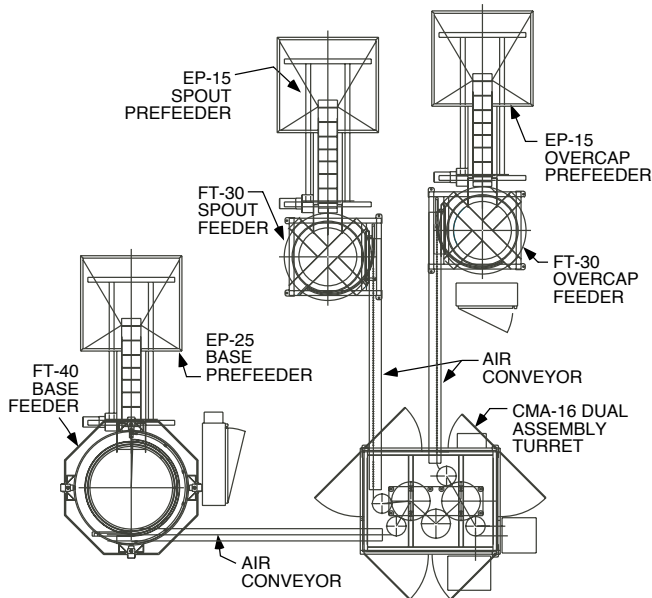
Feeding/Assembly

- ◆ Small/Large Centrifugal Feeders
- ◆ All Stainless Steel Construction
- ◆ FDA Approved ABS vacuum Formed Discs
- ◆ Gentle, Quiet Handling
- ◆ Versatile and Multi-Functional Design for Parts Handling - Customized to Meet Your System Requirements

The sports cap assembly system consists of four (4) major elements; base cap feed system, push pull spout feed system, overcap feed system, and the continuous motion dual assembly (CMA) turret. Base caps, spouts and overcaps exit prefeeders into centrifugal feeders. The bases, spouts and overcaps are oriented diameter to diameter, and exit the feeders into an accumulation air conveyor for delivery to the dual assembly turret.

The base caps and spouts enter the first phase of the dual assembly turret via pocketed transfer wheels. In the first part of the dual assembly turret, the base is placed in the lower nest, while the spout is picked up by a pickup head and secured in place by a hanger yoke. Once the base and spouts are positioned, a dead plate beneath the spout is terminated. The pickup head lowers the spout into place on the neck of the base. The base assembly is fed into the second phase of the dual assembly turret. The base assembly is transferred into the lower nest while the overcaps enter the turret on the upper level. A vacuum head lowers picking up the overcap as the deadplate beneath it terminates. The turret cycles and the vacuum head positions the overcap over the base/spout assembly. The overcap is cammed downward snapping it into place completing the assembly.

3-Piece Sports Cap Assembly System



Shibuya Hoppmann Systems Provide a Full Spectrum of Automation Technology

The versatility of Shibuya Hoppmann components allows for handling a wide range of products quickly, gently and quietly. Since 80-90% of SHC's product line is standard and modular, our products can be easily integrated into your existing line. Or, we will customize a complete system to your particular needs. SHC's reputation for quality and dependability reflects decades of experience, built upon proven products. SHC customers receive the benefit of constant research and development without the corresponding cost. So you're not just buying innovative solutions that are crafted to your individual needs. You're buying a proven winner. Call Shibuya Hoppmann today: We can handle it.



Headquarters

13129 Airpark Drive, Suite 120
Elkwood, Virginia 22718
540-829-2564
fax: 540-829-1726

Indiana Sales Office

1445 Brookville Way, Suite F
Indianapolis, Indiana 46239
317-322-0754
fax: 317-322-0794

Manufacturing Facility

291 Dillard Road
Madison Heights, Virginia 24572
434-929-4746
fax: 434-929-4959

www.ShibuyaHoppmann.com ~ 1.800.368.3582
For more information, email us at sales@ShibuyaHoppmann.com